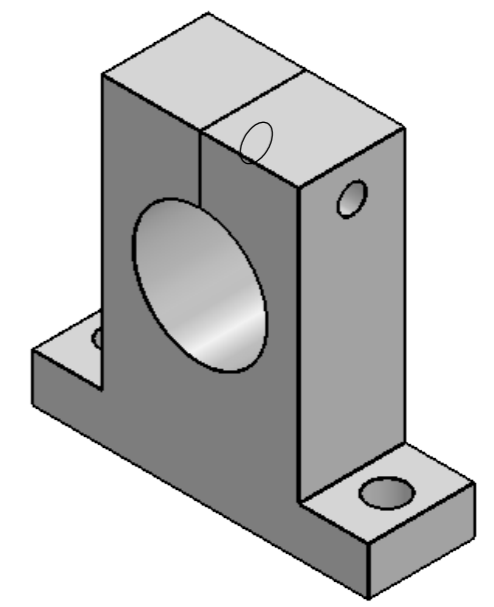
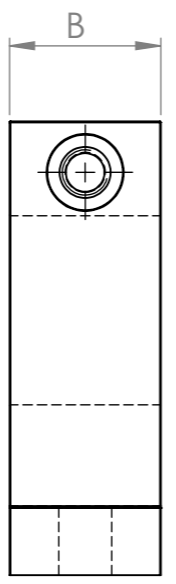
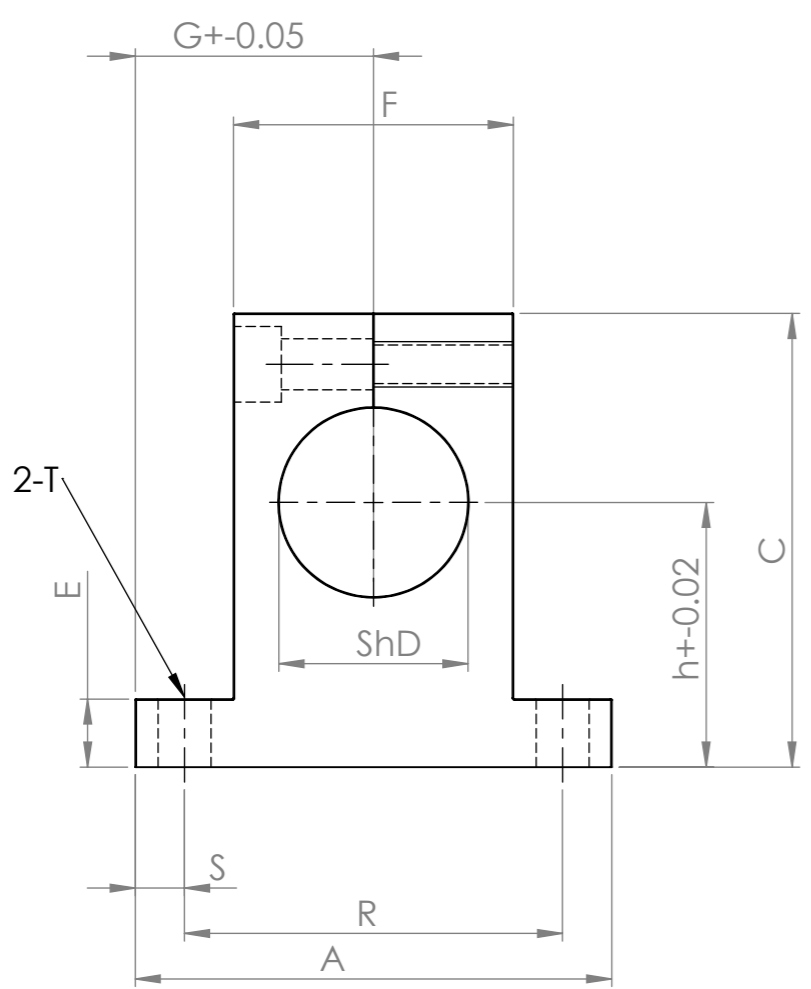


Model	ShD (mm)	A (mm)	R (mm)	S (mm)	E (mm)	h (mm)	C (mm)	F (mm)	G (mm)	B (mm)	T (mm)	Clamping bolt	Mounting bolt	Weight (g)	Verified
SK 8	8	42	32	5	6,2	20,2	32.8	18	21	14	5.5	M4	M5	24	Y
SK 12	12	42	32	5	6	23	37.5	20	21	14	5.5	M4	M5	30	Y
SK 16	16	48	38	5	8	27	44	25	24	16	5.5	M4	M5	40	Y
SK 20	20	60	45	7.5	10	31	51	30	30	20	66.6	M5	M6	70	Y
SK 25	25	70	56	7	12	35	60	38	35	24	6.6	M6	M6	130	Y
SK 30	30	84	64	10	12	42	70	44	42	28	9	M6	M8	180	Y



MATERIAL AL Alloy	STOCK DIM	WEIGHT (g)	SURFACE TREAT. Anodized	NOTES
----------------------	-----------	------------	----------------------------	-------



This documentation is the intellectual property of CNC PRISLUSENSTVO SK.
Feel free to share it and visit our e-shop www.cncprislusenstvo.sk

	NAME	SIGN	DATE	Dimmensions are in mm Tolerances: ISO 8015 Accuracy: ISO 2768 mK
DRAWN				
CHECKED				
APPROVED				
PRODUCT NAME:				
DWG NAME:				

SCALE	1:2	SIZE	A3
DATE	2/7/2018		
DWG NO.	SK-XX		
REVISION :	AA-00		